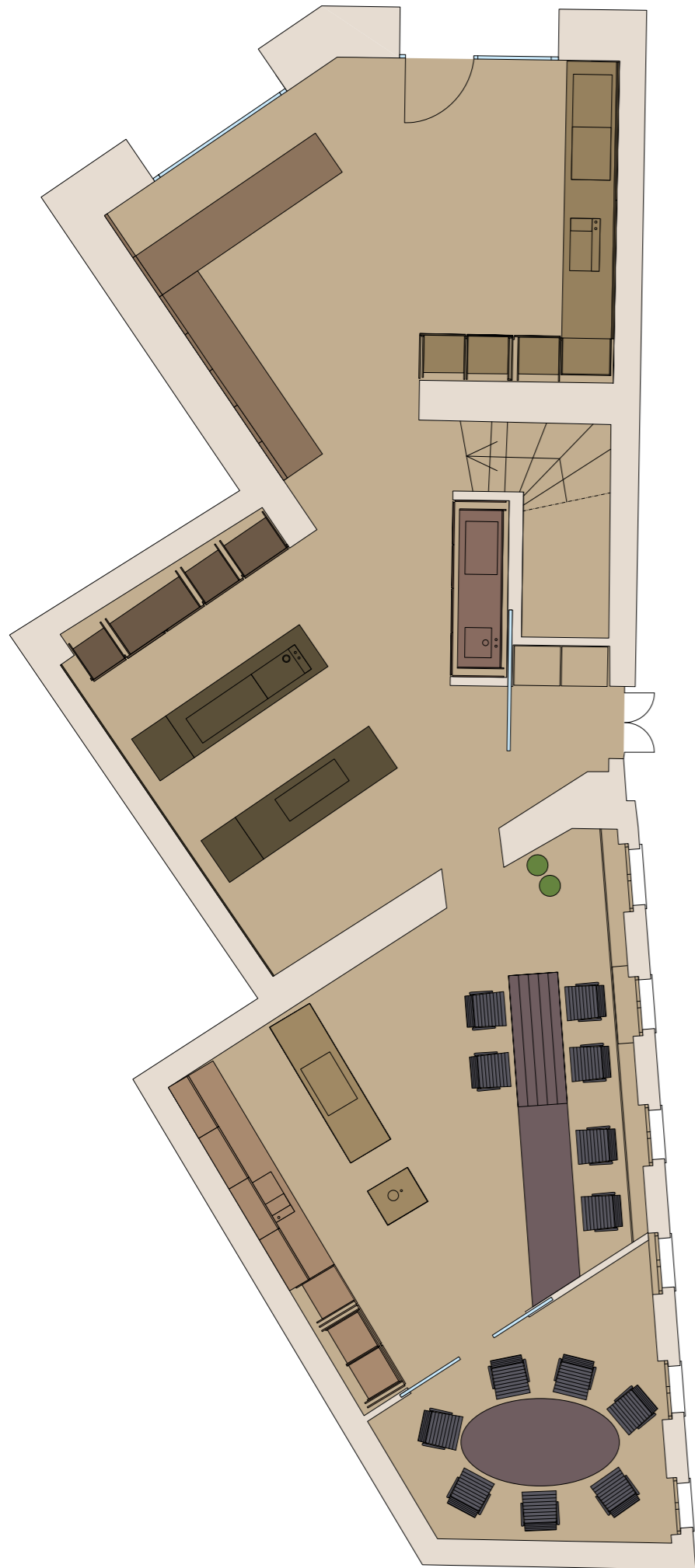




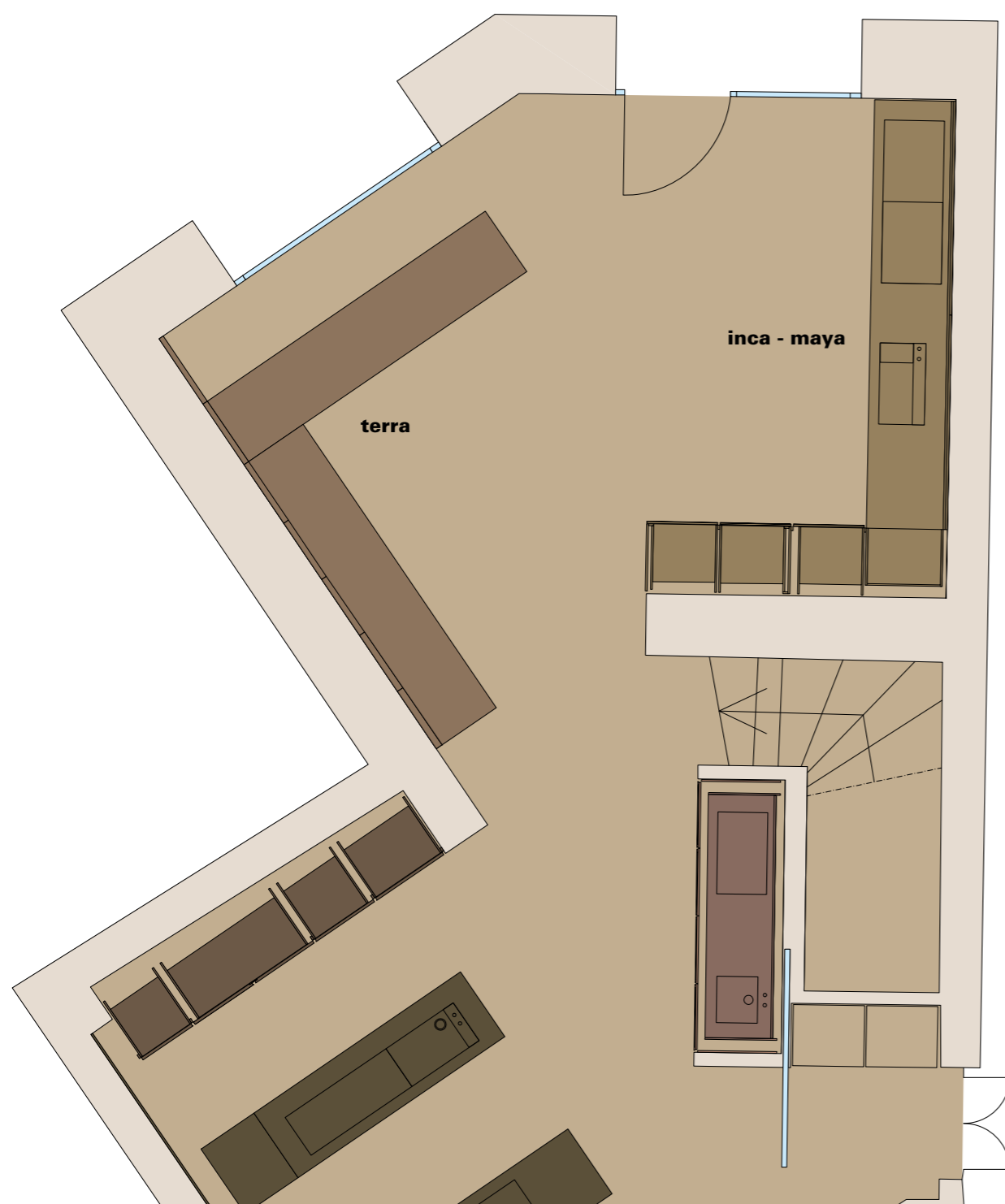
minotticucinemilano si trova in via larga 4, vicino al duomo. lo showroom vanta 350 metri quadri di spazio espositivo con soffitti alti 4,5 metri. minotticucinemilano is located in via larga 4, nearby the duomo. an area of 350 square meters with 4,5 meters height ceilings.



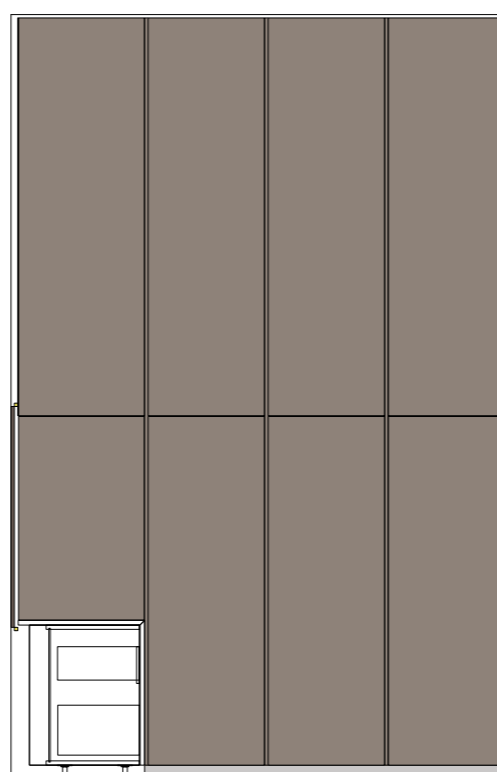
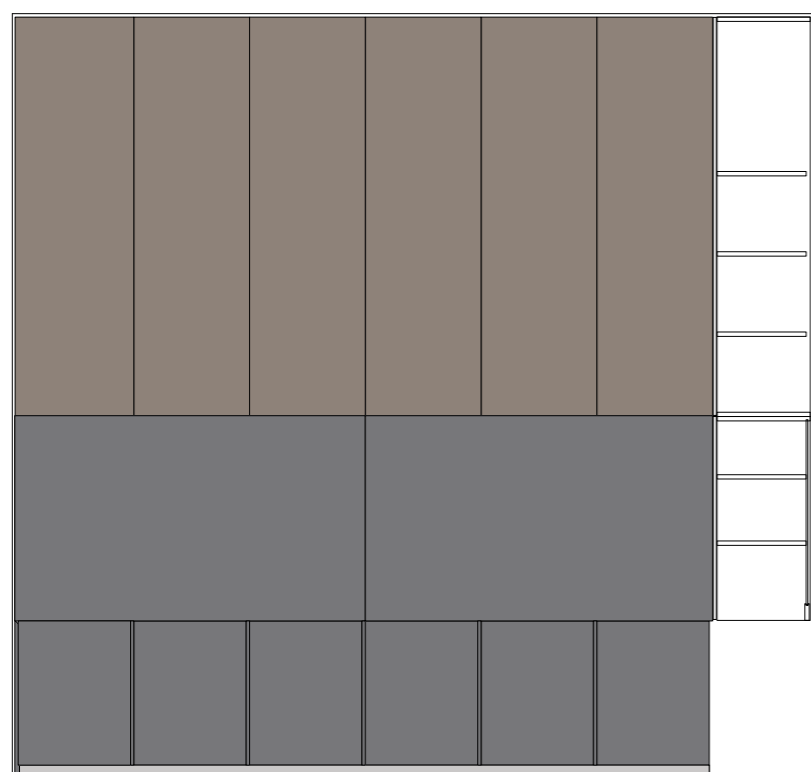






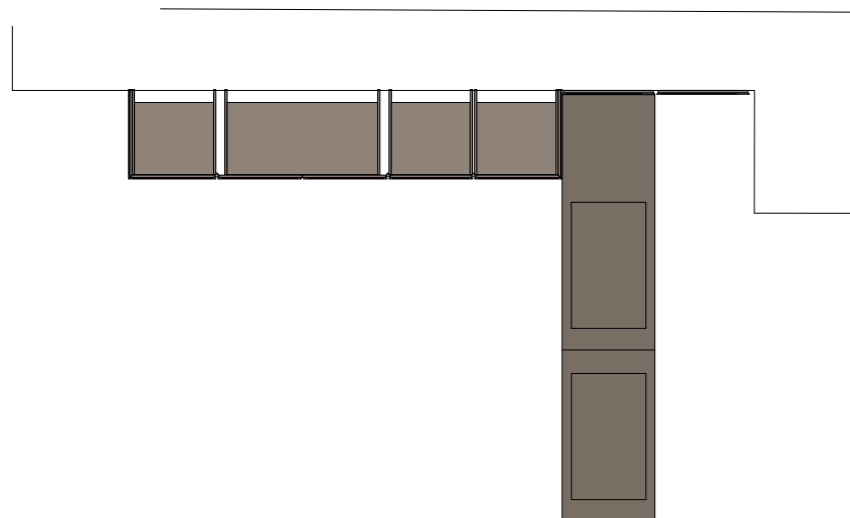
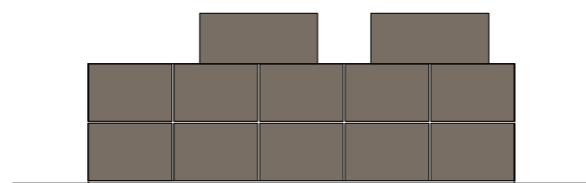
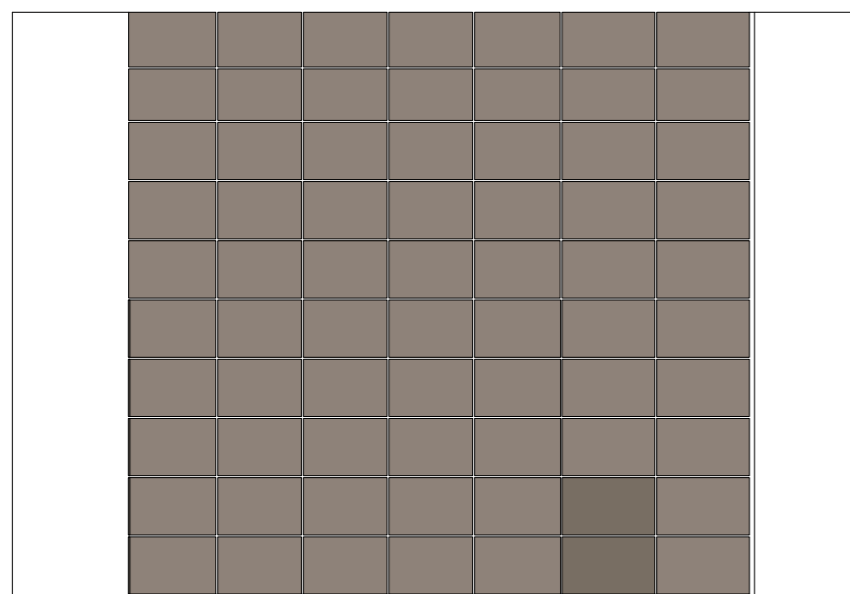


ingresso. inca in pietra dark etna finitura levigata opaca con rivestimento parete in pietra dark etna finitura levigata opaca. completano la composizione le colonne maya e il rivestimento parete in alluminio brunito scuro. dall'altro lato, terra in pietra dark etna finitura levigata opaca. colonne terra e rivestimento parete in ebano verde. entrance. inca model, in dark etna stone matt honed finish with cladding panels in dark etna stone matt honed finish. furthermore maya tall units and cladding panels in dark bronzed aluminum. on the other hand, terra model in dark etna stone matt honed finish. terra tall units and cladding panels in green ebony.



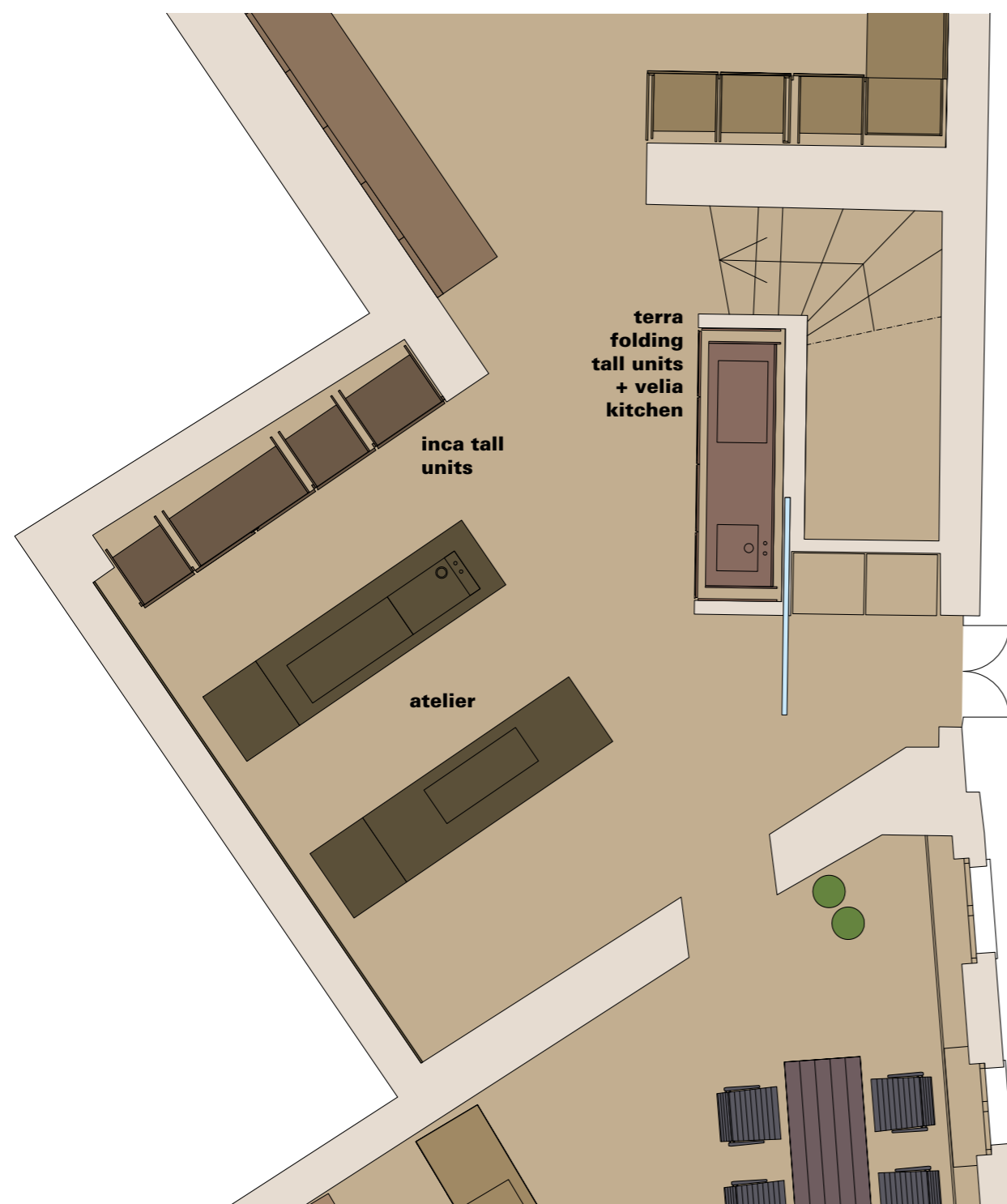
cucine inca in pietra dark etna finitura levigata opaca con rivestimento parete in pietra dark etna finitura levigata opaca. completano la composizione le colonne maya e il rivestimento parete in alluminio brunito scuro. kitchen and cladding panels in dark etna stone matt honed finish. maya tall units and cladding panels, in dark bronzed aluminum.



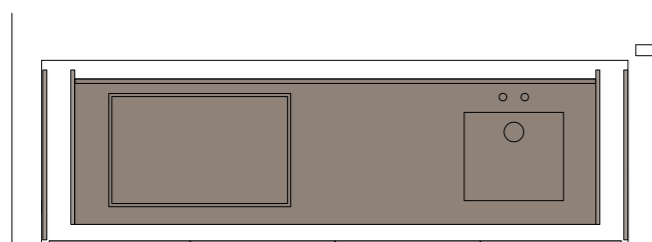
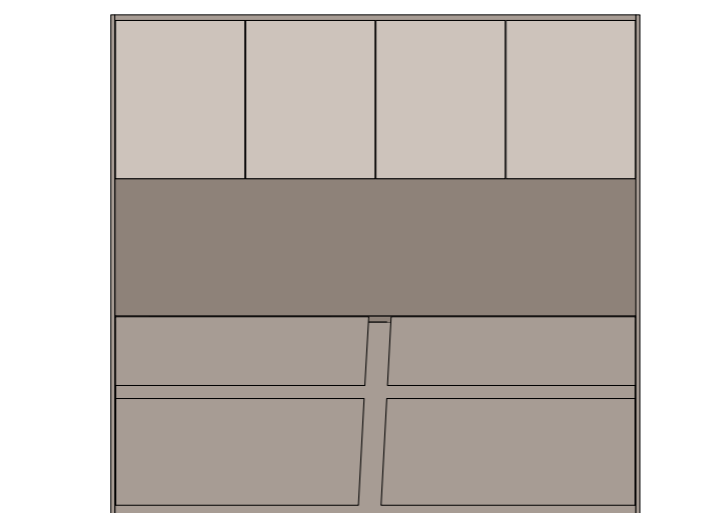
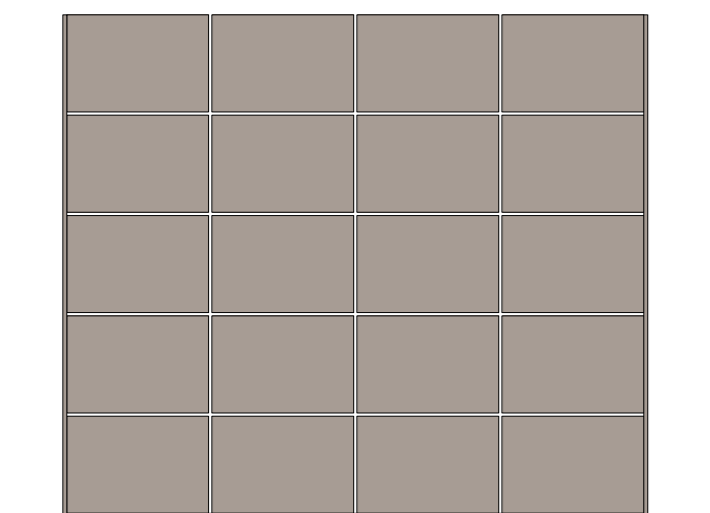


**terra in pietra dark etna finitura levigata opaca.
colonne terra e rivestimento parete in ebano verde.
terra model in dark etna stone matt honed finish.
terra tall units and cladding panels in green ebony.**

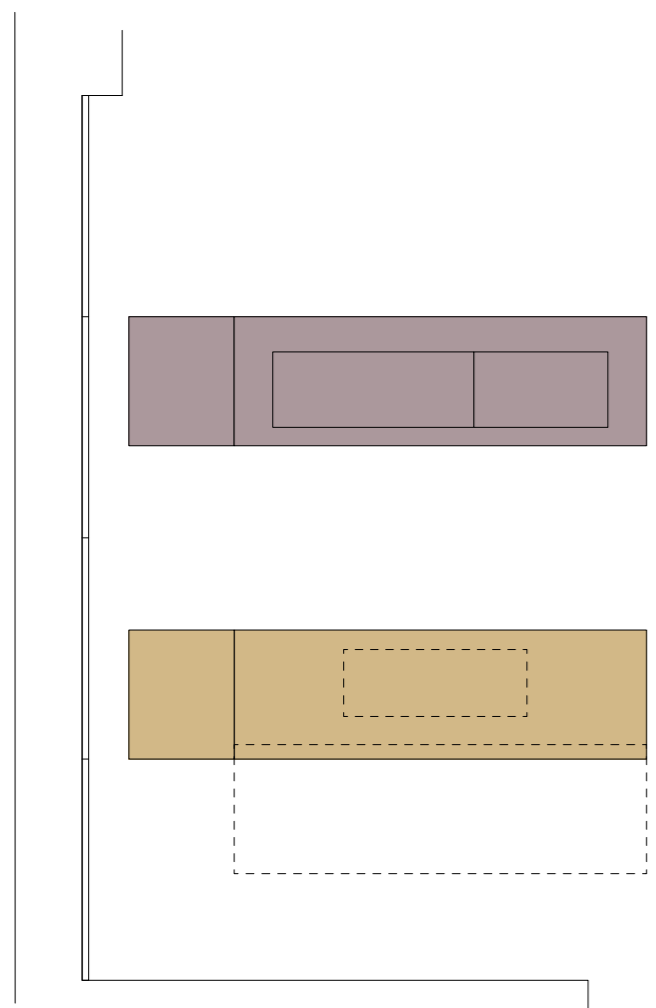
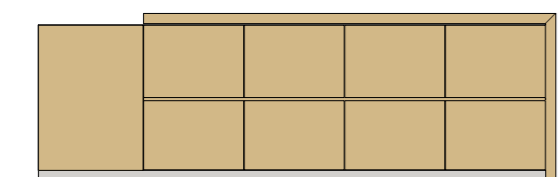
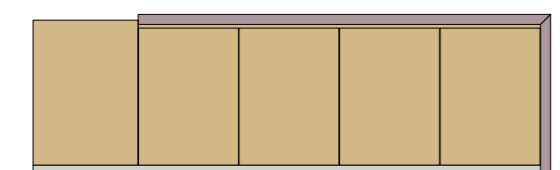




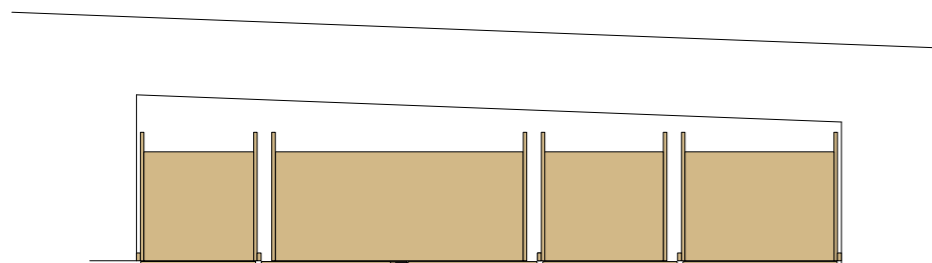
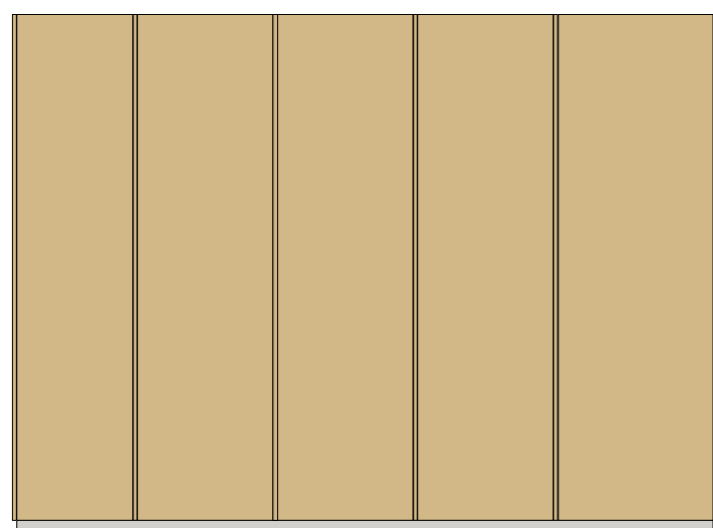
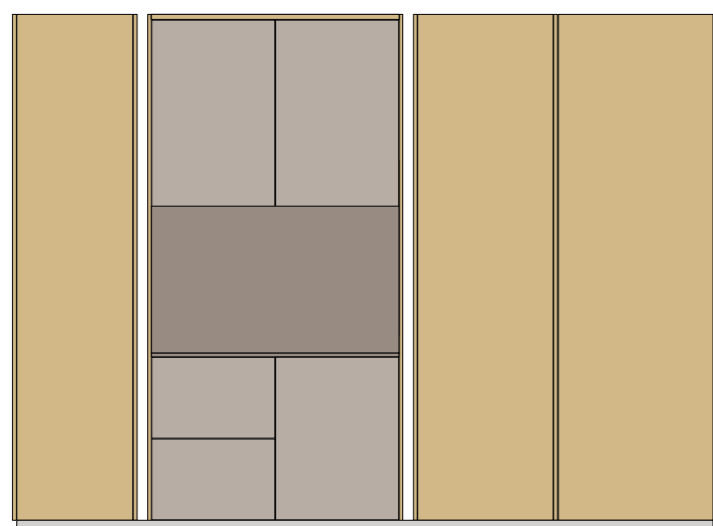
area centrale. vicino alla scalinata che porta al piano interrato, si possono apprezzare le colonne con anta rientrante a soffietto terra in eucalipto tinto grigiobeige. al loro interno, velia con i frontali dei cassetti e dei cestoni in eucalipto tinto grigiobeige, piano di lavoro in pietra lapis beige e pensili in concrete grigio caldo. dall'altro lato due isole atelier. l'isola con piano cottura ha un piano scorrevole ed è stata realizzata in fragrante legno di cedro. sotto lo scorrevole, il piano di lavoro si presenta in pietra bianco di hokkaido. l'isola con lavello ha piano di lavoro e vasca in pietra bianco di hokkaido, ante e frontali in profumato legno di cedro. completano la composizione le colonne inca in legno di cedro. al loro interno si può ammirare la cucina metha in laccato opaco ncs s2005-y50r con piano di lavoro in pietra bianco di hokkaido. central area. nearby the staircase you can appreciate terra model with folding tall units in grigiobeige stained eucalyptus. within the folding units, velia with matt grigiobeige stained eucalyptus fronts, lapis beige stone worktop and wall units in warm grey concrete. on the other hand, two atelier islands. the hob island, is made of fragrant cedar wood with cedar sliding top. underneath, hokkaido white stone worktop. the sink island, is made of cedar wood fronts and white hokkaido stone worktop. the basin is made of hokkaido white stone. inca tall units are made of fragrant cedar wood. within the tall units, you can appreciate metha in matt ncs s2005-y50r lacquer with white hokkaido stone worktop.



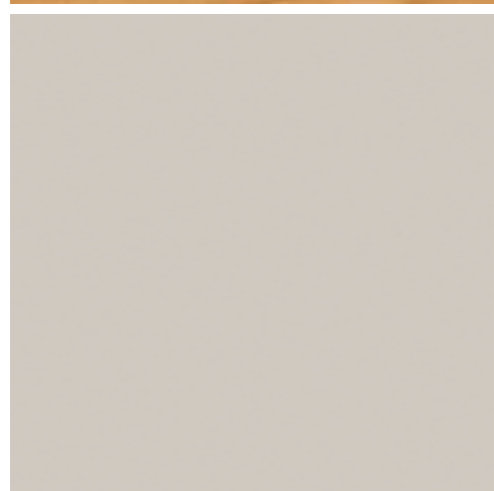
colonne con anta rientrante a soffietto terra in eucalipto tinto grigiobeige. al loro interno, velia con i frontali dei cassetti e dei cestoni in eucalipto tinto grigiobeige, piano di lavoro in pietra lapis beige e pensili in concrete grigio caldo. terra folding tall units made of matt grigiobeige stained eucalyptus. within the folding units, velia kitchen finished in matt grigiobeige stained eucalyptus with lapis beige stone worktop. wall units made of warm grey concrete.



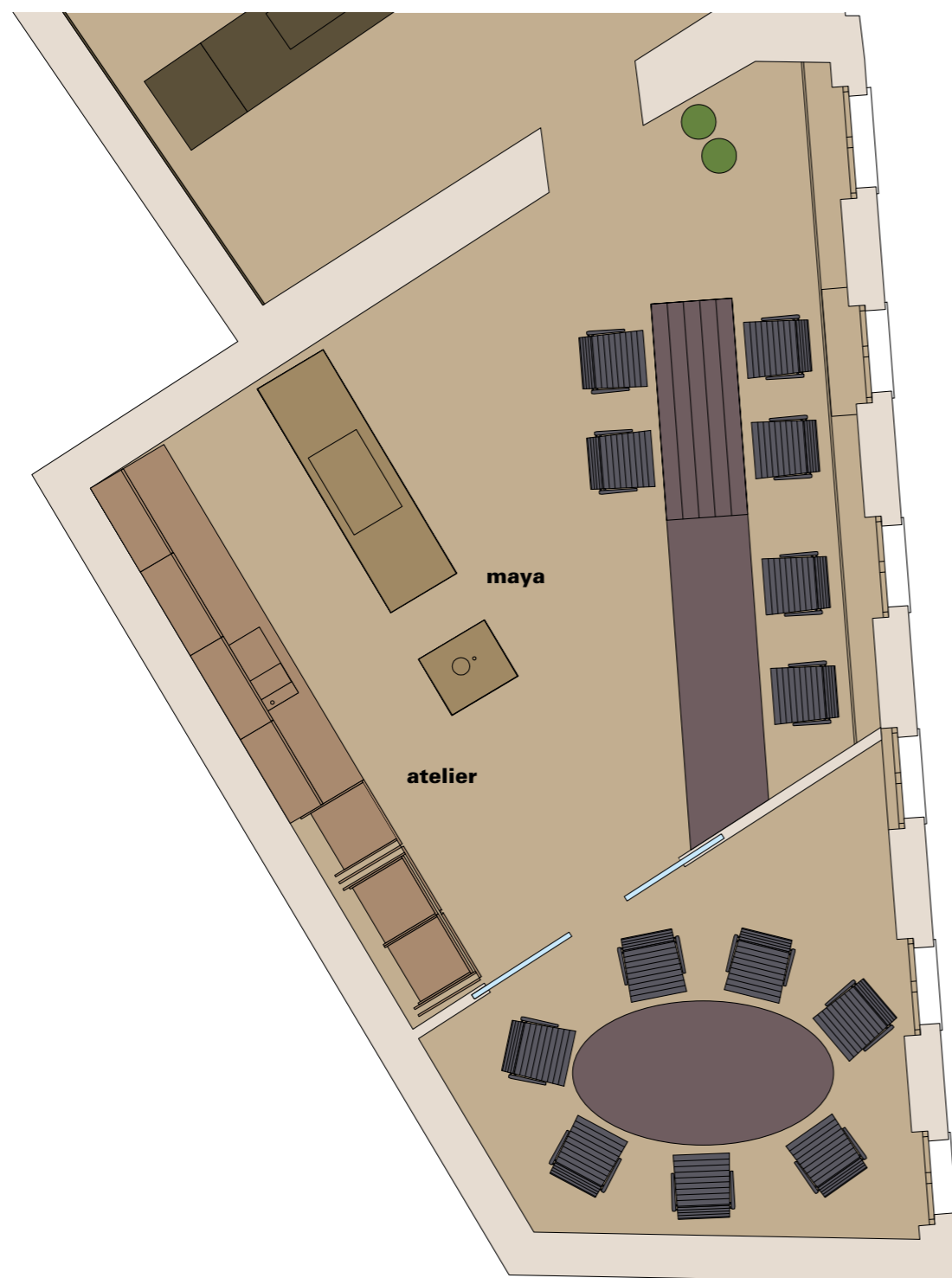
isole atelier. l'isola con piano cottura ha un piano scorrevole ed è stata realizzata in fragrante legno di cedro. sotto lo scorrevole, il piano di lavoro si presenta in pietra bianco di hokkaido. l'isola con lavello ha piano di lavoro e vasca in pietra bianco di hokkaido. ante e frontali in profumato legno di cedro. two atelier islands. the hob island, is made of fragrant cedar wood with cedar sliding top. underneath, hokkaido white stone worktop. the sink island, is made of cedar wood fronts and white hokkaido stone worktop. the basin is made of hokkaido white stone.



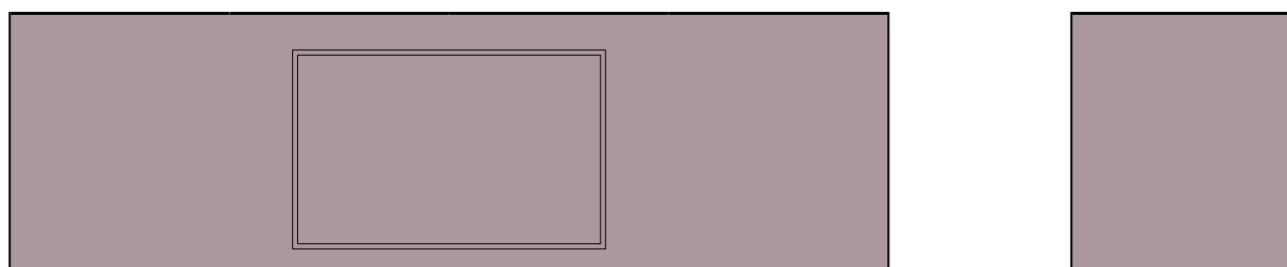
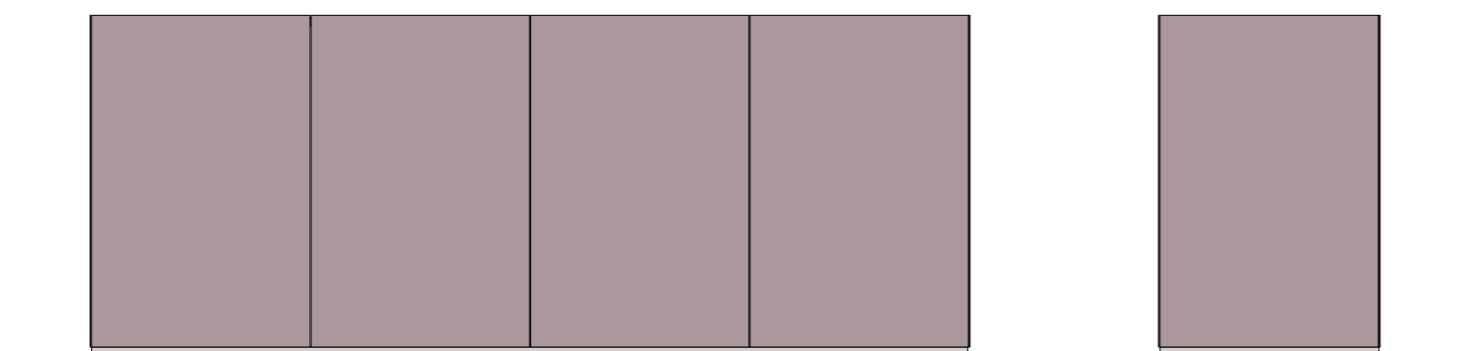
colonne inca in legno di cedro. al loro interno si può ammirare la cucina metha in laccato opaco ncs s2005-y50r con piano di lavoro in pietra bianco di hokkaido. inca tall units made of fragrant cedar wood. within the tall units, you can appreciate metha in mattncs s2005-y50r lacquer with white hokkaido stone worktop.



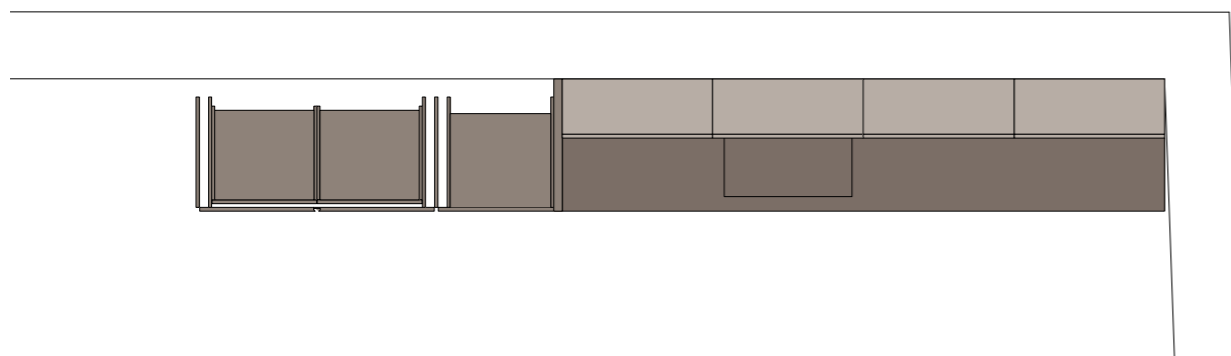
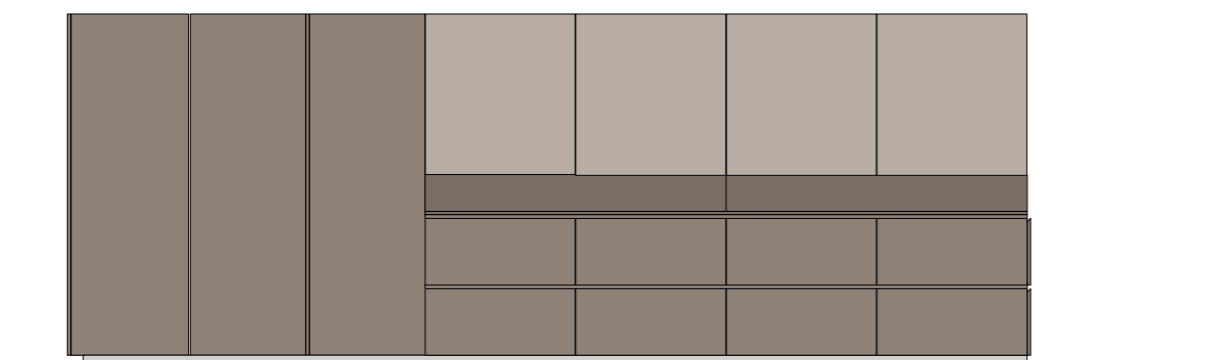
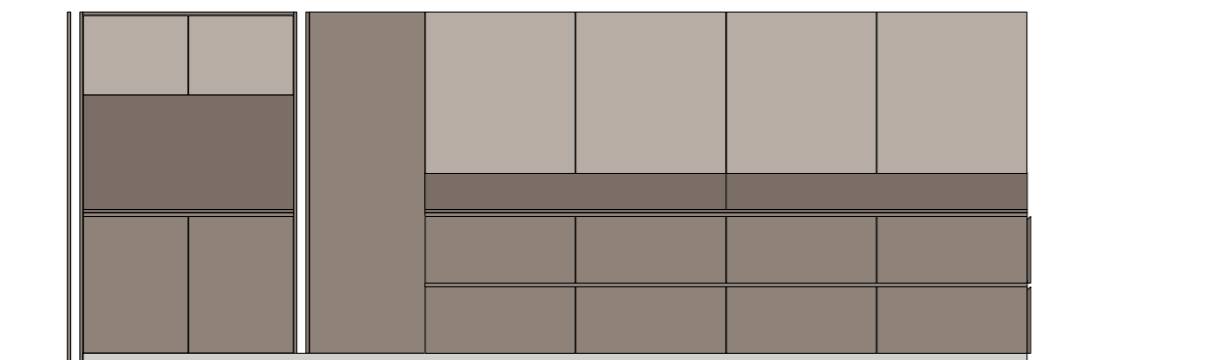
eucalipto tinto grigiobeige - grigiobeige stained eucalyptus
pietra lapis beige - lapis beige stone
concrete grigio caldo - warm grey concrete
legno di cedro - cedar wood
pietra bianco di hokkaido - hokkaido white stone



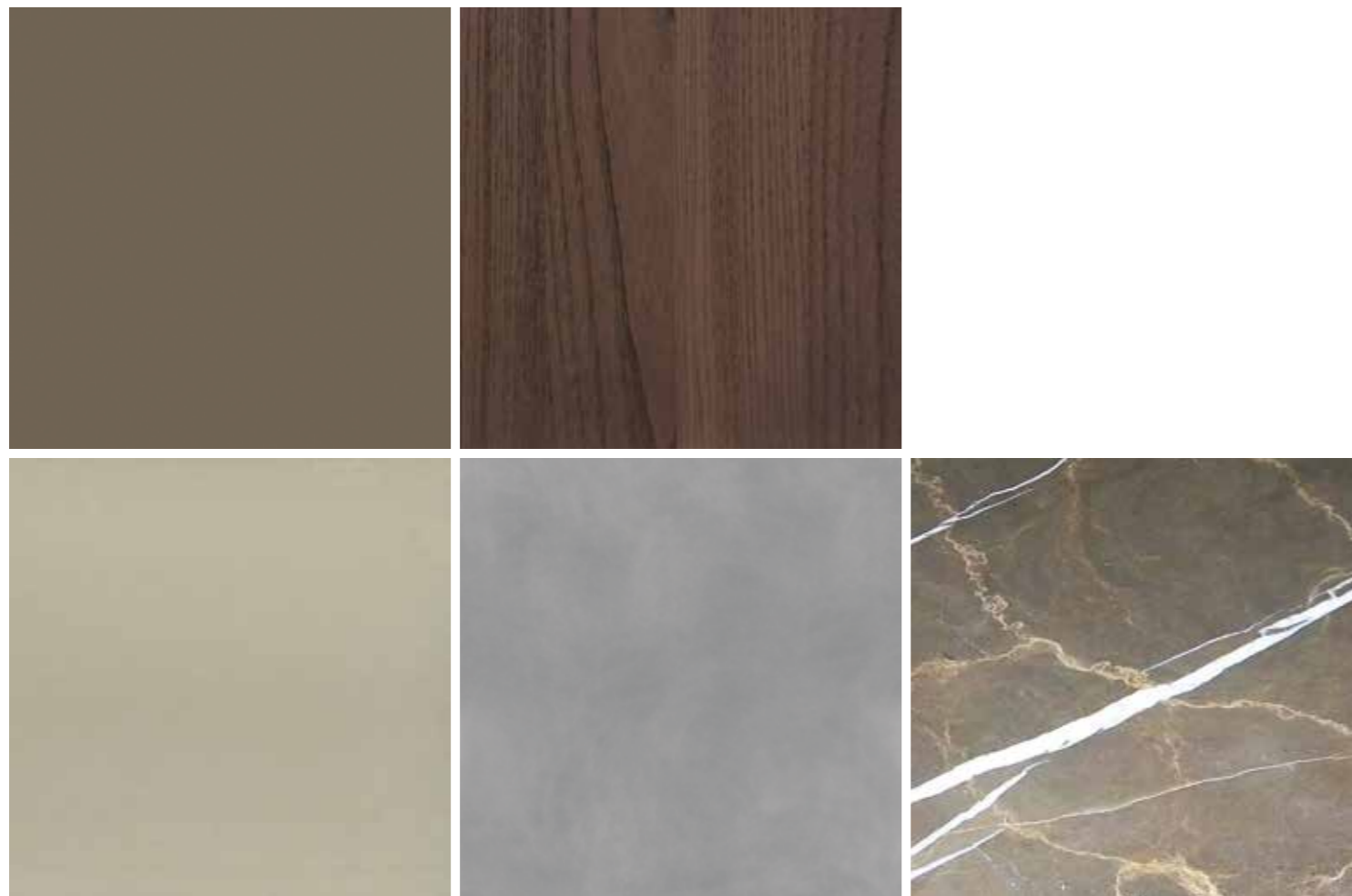
area operativa e meeting. di fronte all'area operativa, realizzata in ebano tinto verde, si può apprezzare maya in alluminio brunito chiaro, piano di lavoro in acciaio inox nuvolato. lungo la parete atelier in grigio hymera, colonne in laccato opaco argilla e pensili in olmo scuro. office and meeting area. in front of the office counter, which is made of green stained ebony, you can appreciate maya model in light bronzed aluminum with cloudy stainless steel worktop. on the back against the wall, atelier kitchen in hymera grey stone, tall units argilla matt lacquered and wall units in dark elm.



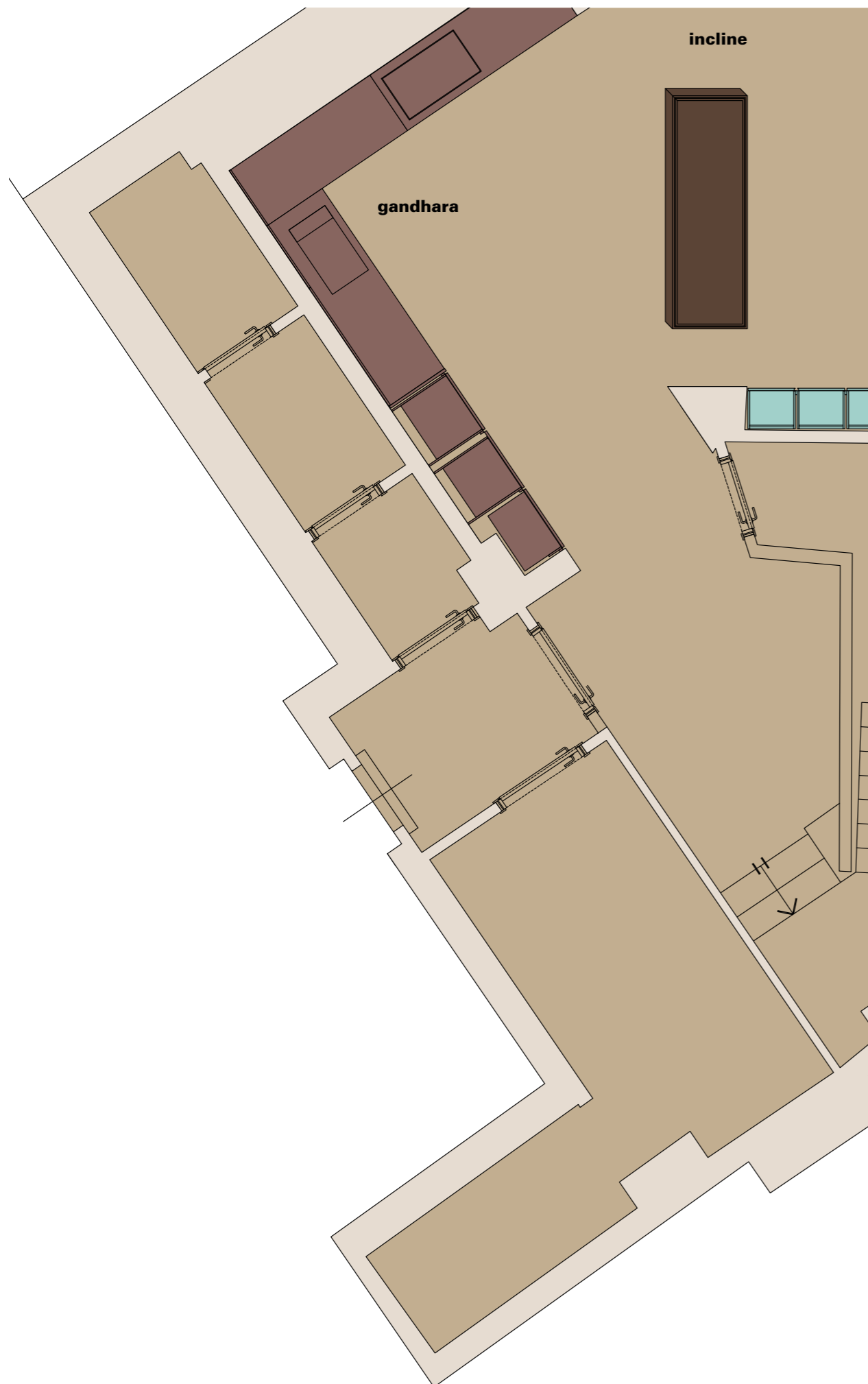
maya in alluminio brunito chiaro, piano di lavoro in acciaio inox nuvolato. maya model in light bronzed aluminum with cloudy stainless steel worktop.



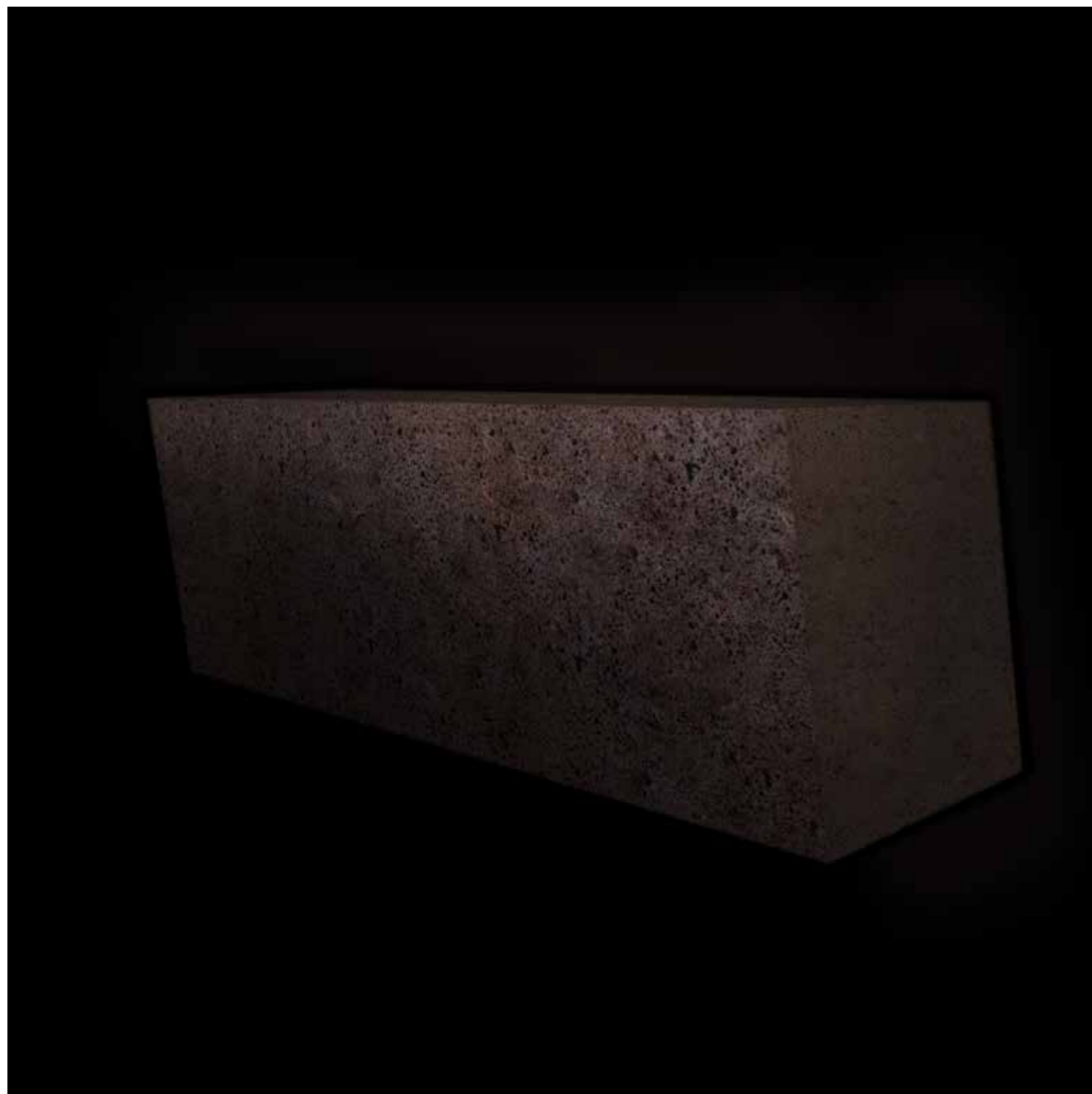
atelier in grigio hymera, colonne in laccato opaco argilla e pensili in olmo scuro. atelier kitchen in hymera grey stone, tall units argilla matt lacquered and wall units in dark elm.

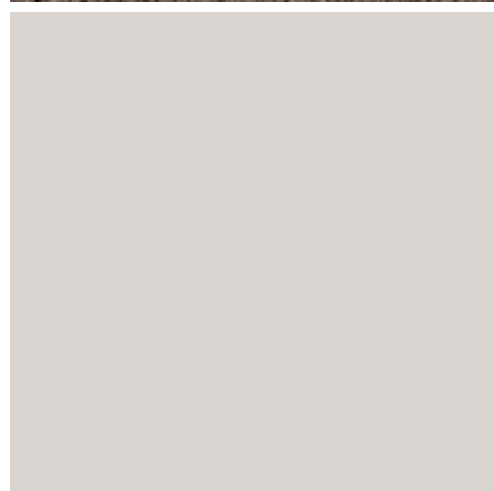
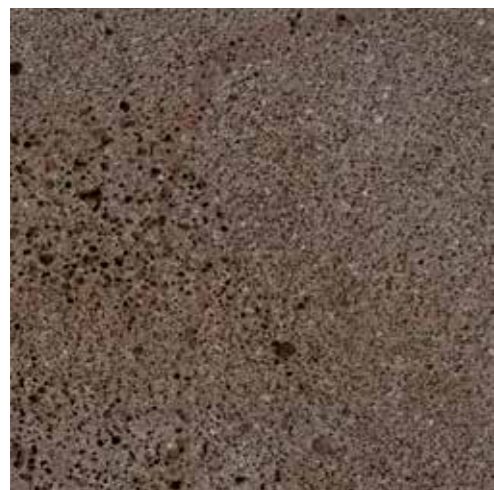


alluminio brunito chiaro - light bronzed aluminium
acciaio inox nuvolato - cloudy stainless steel
pietra grigio hymera - hymera grey stone
laccato opaco argilla - argilla matt lacquer
olmo scuro - dark elm

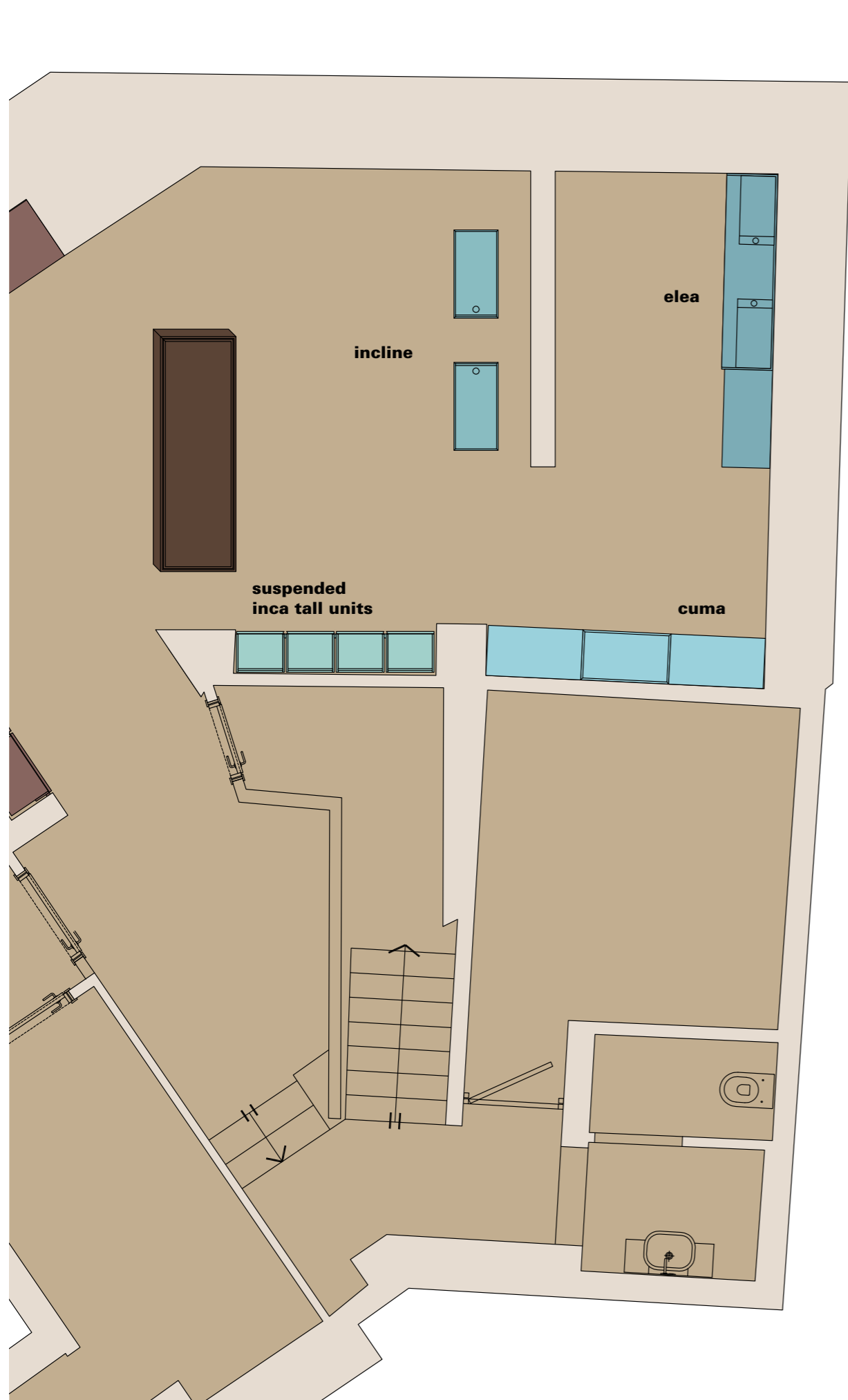


piano interrato. gandhara in laccato lucido ncs s2002-r con piano di lavoro in pietra deep satin, rivestimento parete e pensili in legno tay. cucina da esterno incline in pietra erafuoco rosso. basement. gandhara model glossy ncs s2002-r lacquered with worktop in deep satin stone, cladding panels and wall units in tay wood. incline outdoor kitchen in erafuoco rosso stone.

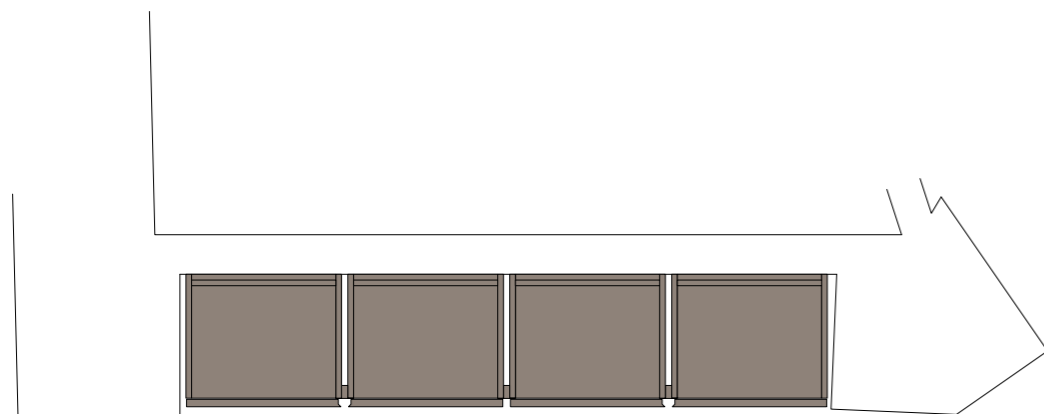
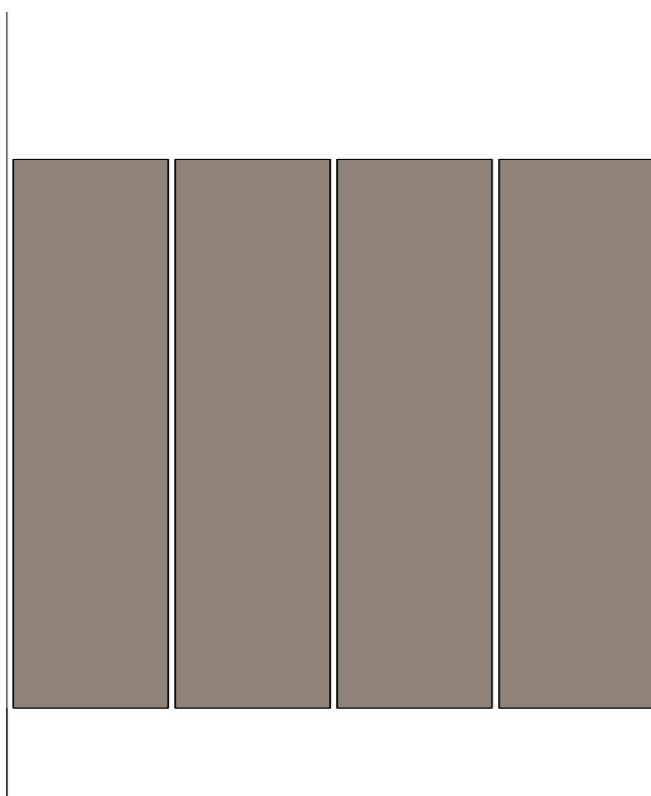




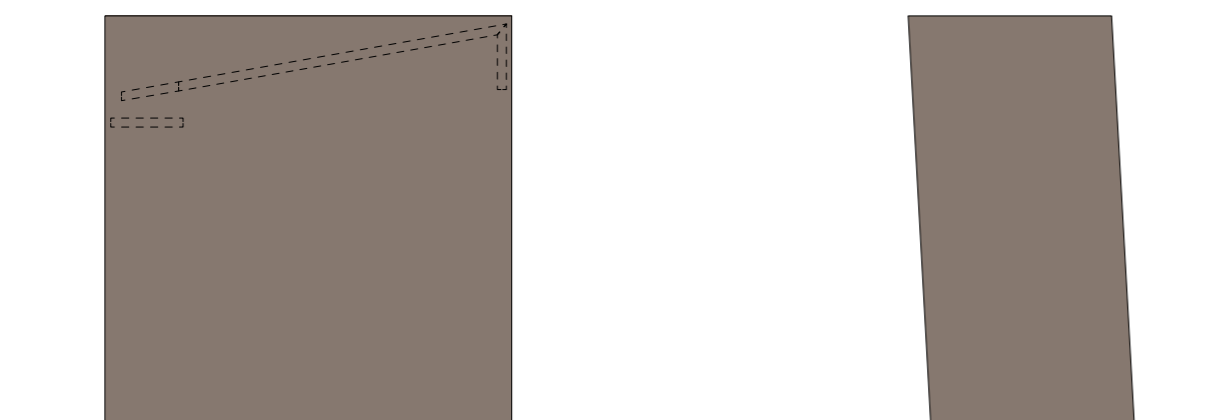
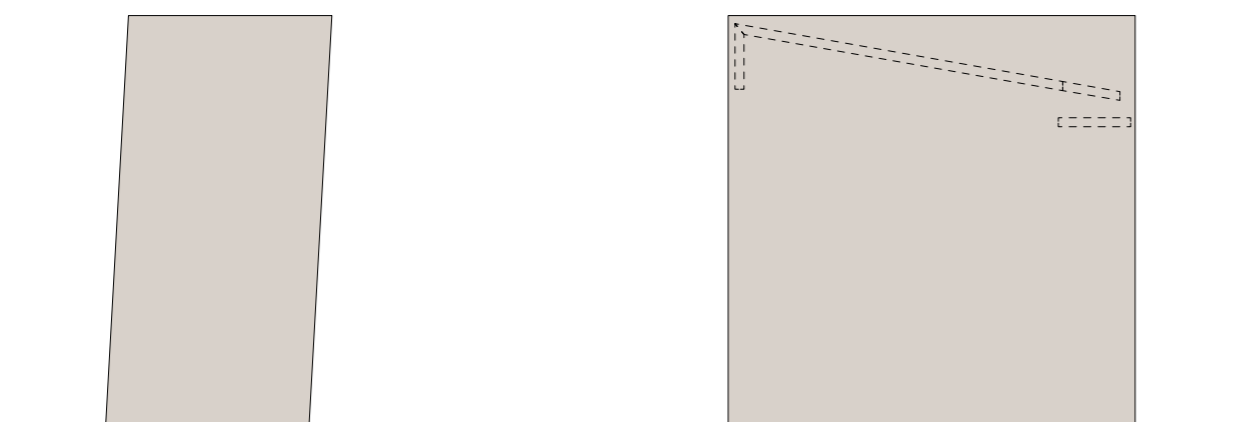
laccato lucido ncs s2002-r - glossy ncs s2002-r lacquer
pietra deep satin - deep satin stone
legno tay - tay wood
pietra erafuoco rosso - red erafuoco stone



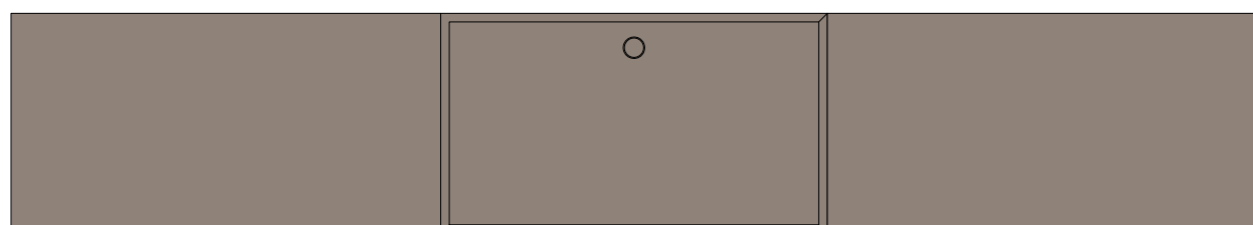
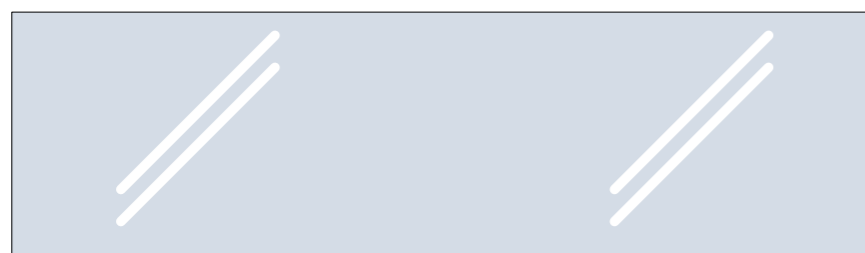
area bagni. colonne sospese in castagno affumicato. due lavabi incline: vasca, piano e frontale apribile in pietra black masai, tutti gli altri lati in pietra indian ink. lavabo cuma in pietra frozen gold. mobile sospeso con anta specchiata a scorrimento verticale. lavabo elea in pietra azteca con mobili sospesi in castagno affumicato. mobile sospeso con anta specchiata e rubinetteria integrata. bathroom area. hanging tall units in smoked chestnut. two incline bathrooms, top side, basin and extractable front made of black masai stone, all the other sides around in indian ink stone. cuma sink in frozen gold stone. elea basin in pietra azteca stone, underneath suspended cabinets made of smoked chestnut. upper hanging cabinets with concealed "joystick tap" and mirror front.



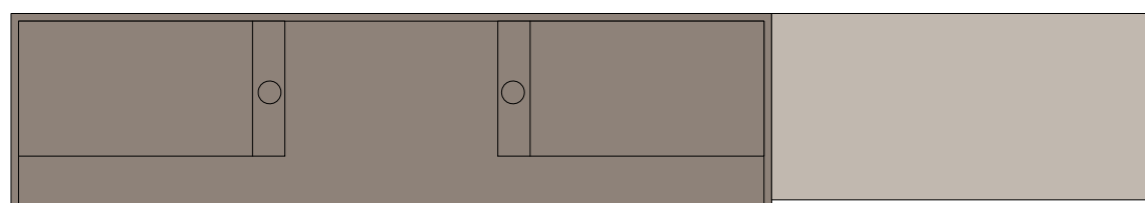
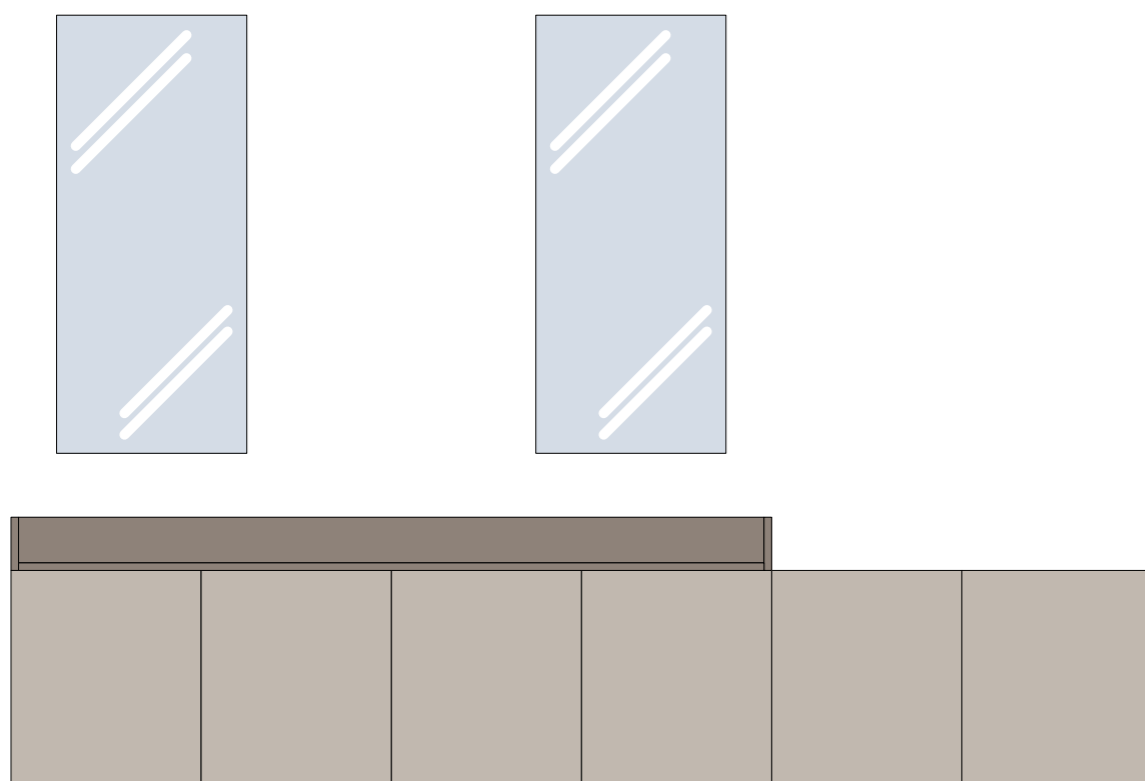
colonne **sospese** **in** **castagno** **affumicato.**
hanging **tall** **units** **in** **smoked** **chestnut.**



**lavabi incline con vasca, piano e frontale apribile
in pietra black masai, tutti gli altri lati in pietra
indian ink. incline bathrooms with top side, basin
and extractable front made of black masai stone,
all the other sides around in indian ink stone.**



**lavabo cuma in pietra frozen gold. mobile sospeso con anta
specchiata a scorrimento verticale. cuma sink in frozen gold
stone. hanging cabinet with vertical sliding mirror front.**



lavabo elea in pietra azteca con mobili sospesi in castagno affumicato. mobile sospeso con anta specchiata e rubinetteria integrata. elea basin in pietra azteca stone and underneath suspended cabinets made of smoked chestnut. upper cabinets with concealed "joystick tap" and mirror front.



**castagno affumicato - smoked chestnut
pietra black masai - black masai stone
pietra indian ink - indian ink stone
pietra frozen gold - frozen gold stone
pietra azteca - pietra azteca stone**

A S S O
GROUP

minotticucine

via brennero, 41-43

san pietro in cariano

37029 verona italia

t. +39 045 6835111

asso@assospa.it

www.assospa.com

info@minotticucine.it

www.minotticucine.it